

Essential details

Model Number:FasTechCircuit-PCB/FPC-1

Type:wireless charging PCB

Place of Original:Guangdong, China

Brand Name:FasTechCircuit

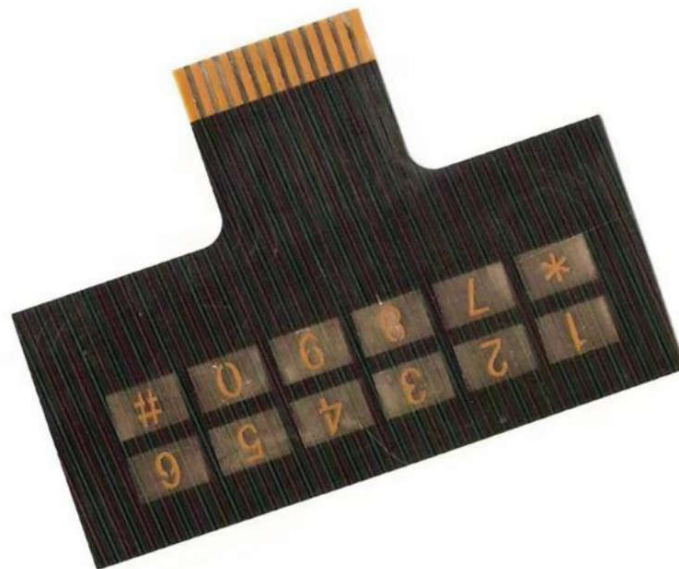
Copper Thickness:H oz

Coverlay: black

Treatment: ENIG(immersion Gold)

Layer count:2

Application:5G product, computer product



Capability:

PCB SMT assembly Layers:1 Layers to 30 layer

Solder mask color:Blue.green.red.black.white.orange

PCB SMD Assembly service type:DIP/SMD or Mixed SMD & DIP

Warranty:2 years

SMD speed:CHIP components SMD speed 0.3S/pcs, max speed 0.16S/pcs

Required Docs for PCBA:Gerber file with BOM list & Pick-N-Place File(XYRS)

IC Encapsulation type:SOP/CSP/SSOP/PLCC/QFP/QFN/BGA/FBGA/u-BGA

Chip Size(min):01005

Drilled hole size(min):0.075mm

Application:Consumer Electronics

Supply Ability:60000 Piece/Pieces per Month

Basic Info

Model NO: Flex PCB(FPC) TK6

Application:Medical Device

Condition:New

Certificate:ISO9001, ISO14001, IATF16949, Is013485

MOQ:1 PCS

Layer:2 layer

Surface Finishing:Immersion Au

Min.Hole Size:0.1mm (4 Mil)

Board Thickness:0.13mm(5mil)

Min.Line Spacing:0.1mm (4 Mil)

Copper Thickness:0.5oz(18 um)

Coverlay: yellow

Specialised:CE, LED, Medical, Industrial, Control Board

Service:PCB/PCBA/Circuit Board/SMT/DIP

Other Service:PCBA Layout and Design, Engineering Support

Delivery:5 Days

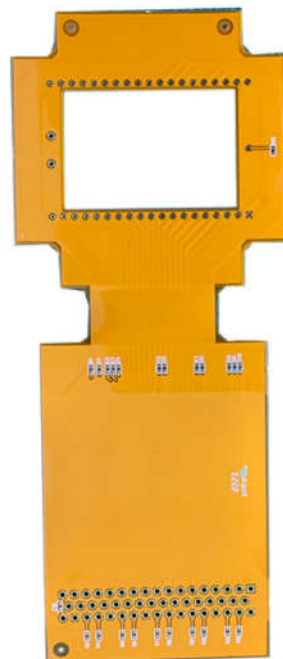
Transport Package:Vacuum Packing/Blister/Plastic /Cartoon

Specification:CE, UL, SGS, ISO9001, 94v0, Rohs, FCC

Origin:Shenzhen, Guangdong, China

HS Code:8534009000

Production Capacity:5, 000, 000PCS /Month



Model NO:PCB02457

Base Material:PI (Polyimide)

Certification:RoHS, CCC, ISO

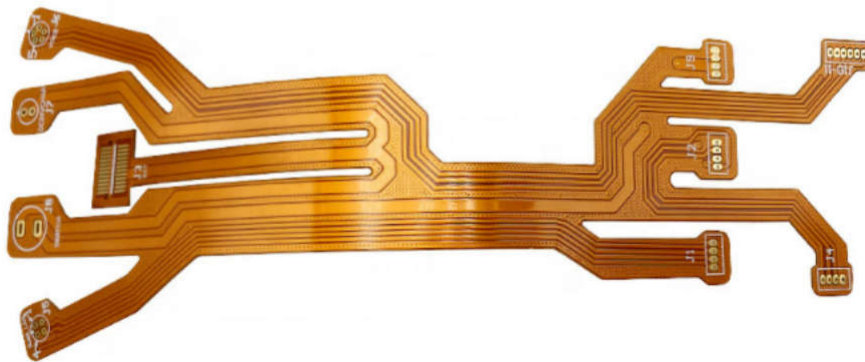
Transport Package:Vacuum Packed

Specification:L1, 1 OZ copper, FPC, 0.12mm, no stiffer, yellow coverlay

Trademark:FasTechCircuit

Origin:Mainland China

Production Capacity: 1000000 PCS/monthly



FAQ about FasTechCircuit:

How long have your company in this field?

We are OEM plant on PCB(printed circuit board) fabrication with experience over 18 years.

Why Choose us?

FasTechCircuit is forced up to the mount as a good choice as your partner for PCB making , you can get

- **Industry's Best ON-TIME Shipping Record**
- **Expedites a specialty...even Same Day & Weekend Turns**
- **Standard Spec orders shipped on time - or FREE!**

Model Number:pcb machine fr4 copper clad laminate/PI polyimide material

Type:circuit board nickle board

Place of Origin:China

Brand Name:FasTechCircuit

Number of Layers:2

Base Material:PI polyimide material

Copper Thickness:H OZ

Board Thickness:0.15mm

Min. Hole Size:0.15mm

Min. Line Width:2mil

Min. Line Spacing:2mil

Surface Finishing:ENIG

Board Size: 125 x 259 mm

