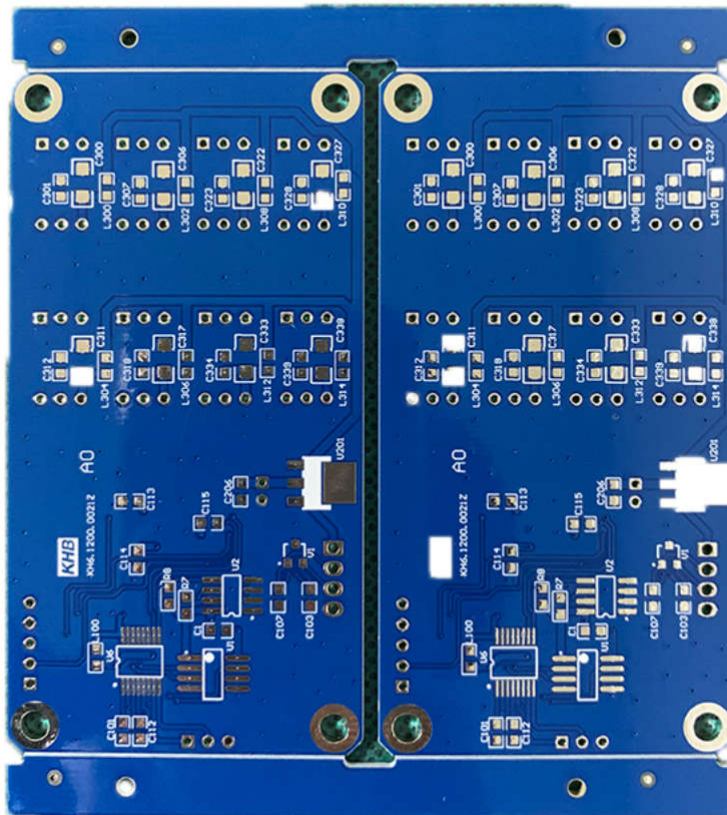
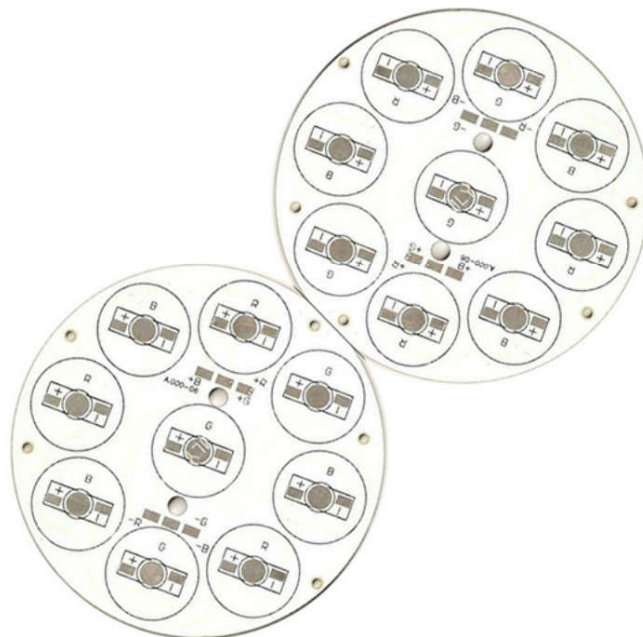


### Essential details

Model Number	PCBA 0006
Place of Origin	China
Brand Name	FasTechCircuit
Supplier Type	OEM
Copper Thickness	1oz 2oz 3oz 4oz 5oz
Product name	pcb pcba
Surface Finishing	HASL\OSP\immersion Gold
Service	OEM Services Provided
Certificate	ISO9001/Iso14001/CE/ROHS
Application	Electronics Device
Base Material	FR4/ROGERS/Aluminum/High TG
Solder mask	White Black Green Blue Red
Layer	1-30 Layers
Testing Service	100% AOI ICT FCT Testing
MOQ	1 PCS



Part number	LED PCBa-00083
Layer count	1
Material	Aluminum
Thickness	1.6mm
Copper	2 OZ
Treatment	LF HAL
Solder mask	White
Silkscreen	Black
Shape	V CUT + routing
Application	LCD, LED light,telecommunication,power, security, Optronics, industrial control
Min trace width	6mil
Min trace gap	6 mil
Boare size	68x 89 mm
Trademark	FasTechCircuit
HS code	8534009000



**Model Number: FasTechCircuit-0798**

**Base Material: FR-4**

**Board Thickness: 0.2mm-7.0mm**

**Min. Line Spacing: 0.003"**

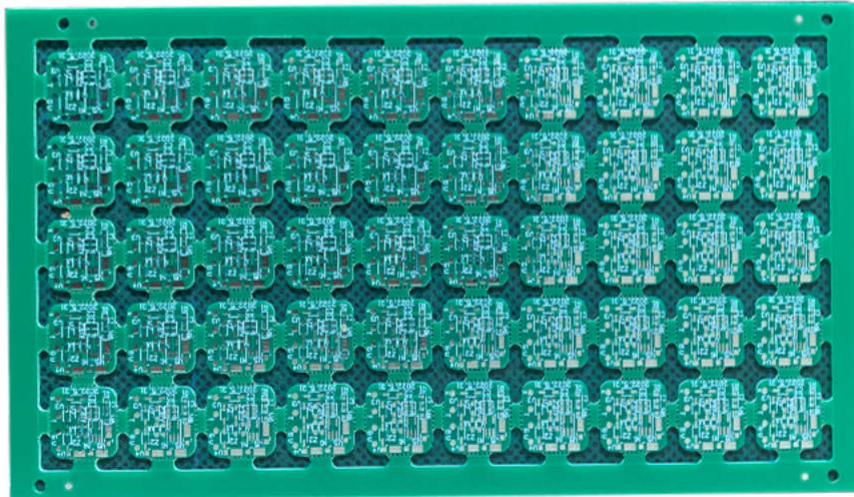
**Solder mask: White Green Red**

**Certificate: ISO9001/Iso14001/CE/ROHS**

**PCBA service: yes**

**Copper:1-12 OZ**

**Production time: 5 days for sample, 14 days for mass production**



#### **Quick Details**

**Supplier Type: OEM**

**Place of Origin: China**

**Copper Thickness: 0.5oz-12oz**

**Min. Hole Size: 0.25mm**

**Surface Finishing: HASL,ENIG**

**Usage: OEM Electronics**

**Layer: 1-30 Layers**

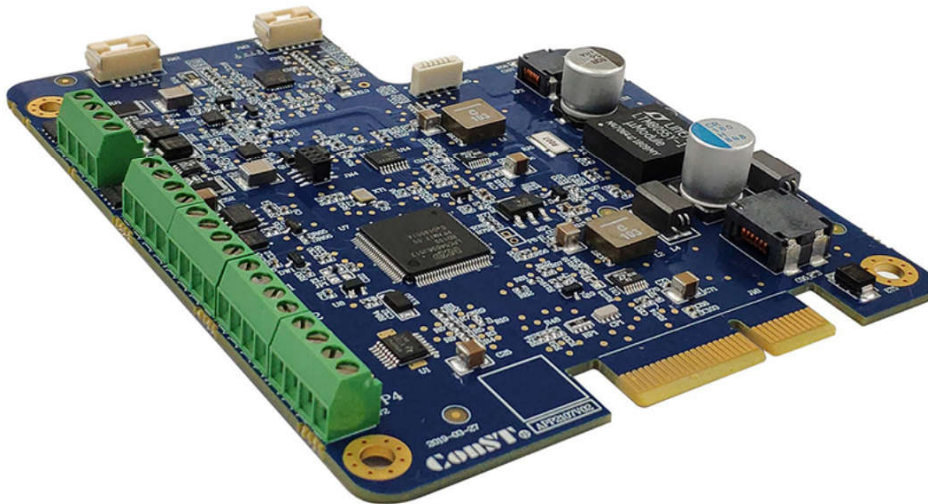
**Product Certification Qualified:CE Certified**

**Supply Ability: 1000000 Piece/Pieces per Month**

**Packaging Details: Vacuum, ESD, Carton**

**Port: FCA SHENZHEN**

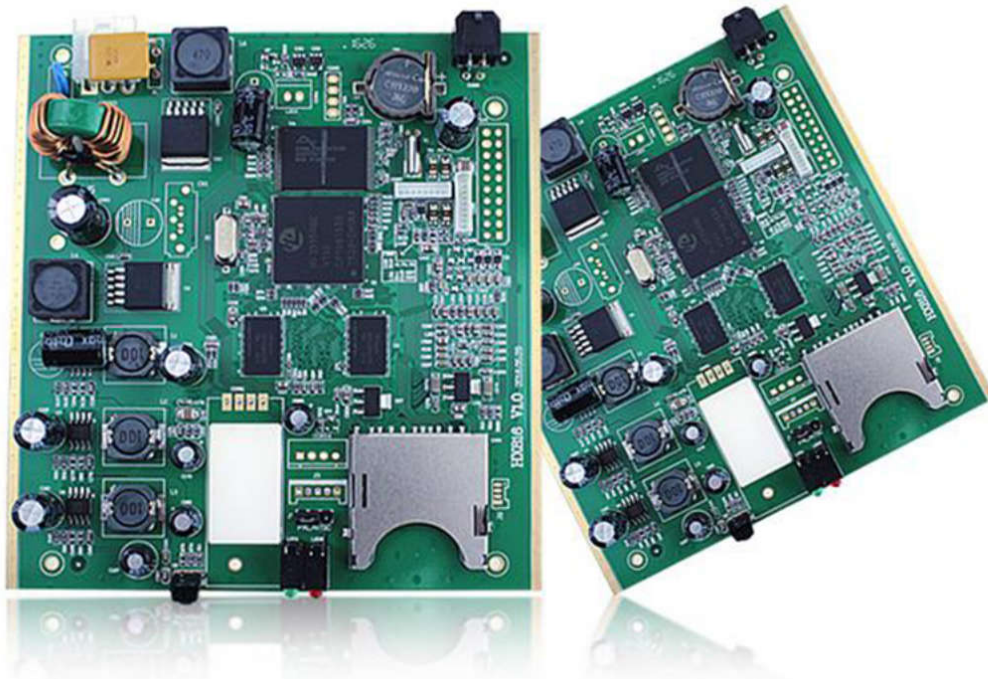
**Product:** PCB used in Industry Control  
**Materials:** FR-4 TG180 IT180A  
**Quality standard:** IPC 6002-II  
**PCB DK:** 4.2-4.7  
**Layer:** 12  
**Thickness:** 1.8mm  
**Copper Thickness:** 1 OZ  
**Ground technology:** ENIG  
**Application:** Industry Control equipment



#### **Product Description**

**High safety, learning code, rolling code for option**  
**Automatic close with delay time setting**  
**soft start, strength is adjustable**  
**soft stop, strength is adjustable**  
**motor running strength adjustable according to load**  
**Reverse when meet resistance**  
**automatically open when people detected during closing cause.**  
**running time can setting automatically by manual open/close door once, running time 5-120S**  
**Set half-open/full open by remote control**

**Product name:**PCBA for consumer electronic  
**Type:**motherboard pcb, Electronic Board  
**Place of Origin:**Shenzhen, China  
**Copper Thickness:**1 oz  
**Layers:**1-30 L  
**Material:**FR4 CEM1 Rogers  
**Size:** 260x159mm  
**PCBA service:**SMD SMT DIP Component Assembly  
**Package:**Standard Package  
**Color:**Red Blue Green Black White



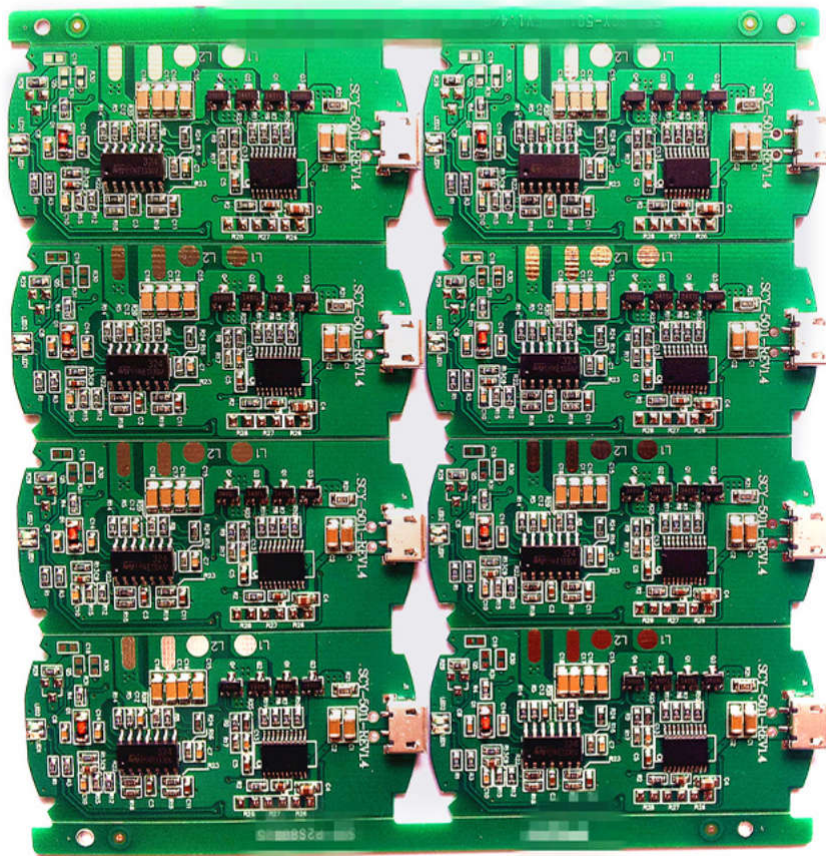
**We are FasTechCircuit who is PCB factory from China.**

**We provide a one-stop service including PCB fabrication, components sourcing and SMT assembly, wave soldering ,burning software,final assembly and function testing.**

**18 Years PCB & PCBA Factory SMT DIP Bare PCB And Electronic Components Assembly**

**We offer One-stop Service.**

Model NO.Multilayer PCB, L8  
PP Thickness:7628(0.18mm) +2116(0.12mm) +1080(0.08mm)  
Core Base Board:0.3mm/0.5mm/0.6mm/0.8mm/1.0mm  
Sample Date:5-7days  
Shipment:Air,Sea,Express(DHL TNT FedEx EMS UPS)  
Transport Package:Vacuum Packing  
Specification:UL ISO TS16949 IPC Standard  
Origin:China  
HS Code:85340090



Brand: FasTechCircuit  
Item Description:rc car circuit boards / remote control pcb board / toy car pcba / remote control car circuit board  
Item Number:KK-P0224924  
Function:2 channel control with 3D light  
Size:Customized  
Color:green, white, yellow, blue, red, black  
Package: standard package  
Delivery Time:7-20 days

Samples Stock sample: 1-2days; Custom sample: 5-7days

Layer counts: 8L

Board thickness:1.6mm

Panel size: 183.14 X 98.56mm

Laminates: FR4 TG150

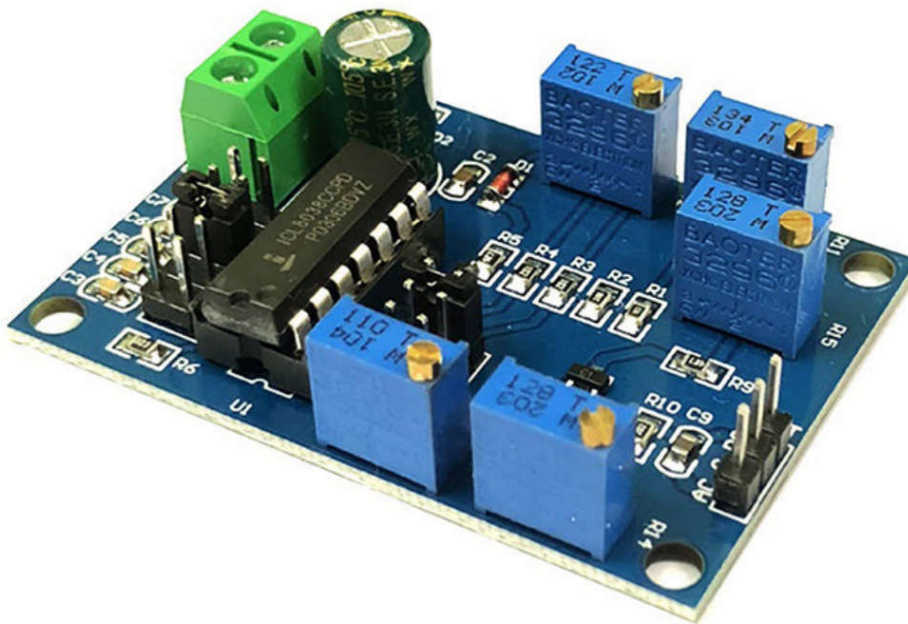
hole size: 0.20mm

Line width/space: 0.1/0.1mm

Surface finish: ENIG

Features: small BGA,

Application field: Fan Air Cooler DC Motor Control



## WHY CHOOSE FASTECHCIRCUIT PCB?

### Quick-Turn Production

FasTechCircuit offers small volume production in 5-6 days and medium-to-large production in 2 weeks.

### Make Logistics Easier

When you work with FasTechCircuit , there is no need to deal with multiple suppliers, language barriers, customs headaches and shipping logistics.

We do it all - and deliver to your designated port.

